

Associate Mailto: With Your Email Client

Setting up your favorite email client to handle mailto: links is a one-time tweak and doesn't take much of an effort. Even if it looks like an insignificant change, you're sure to appreciate the way it smoothes out your workflow.

In Windows 10

In Windows 10 click your window in the lower left corner. Click the gear icon for **Settings**, click apps, **Default Apps**. Scroll down and pick “**Choose default apps by protocol**”(Mail). In the search (lower left next to windows icon) type **Mailto**, choose the client of your choice.

In Windows 11

Open the Settings app (press **Windows key + I**) and head to **Apps > Default apps**. Under **Set a default for a file type or link type**, in search type "mailto," this will bring up the Mail protocol. Click it, and then select the desired program from the list.

OR

CHANGE SETTINGS IN YOUR FIREFOX OR CHROME

Opening Mailto: Links in Webmail (Gmail, Yahoo! Mail, and Hotmail)

If you prefer the webmail experience, depending on the browser and the webmail service that you use, let's see how you can make those two work in harmony to handle mailto: links.

In Chrome

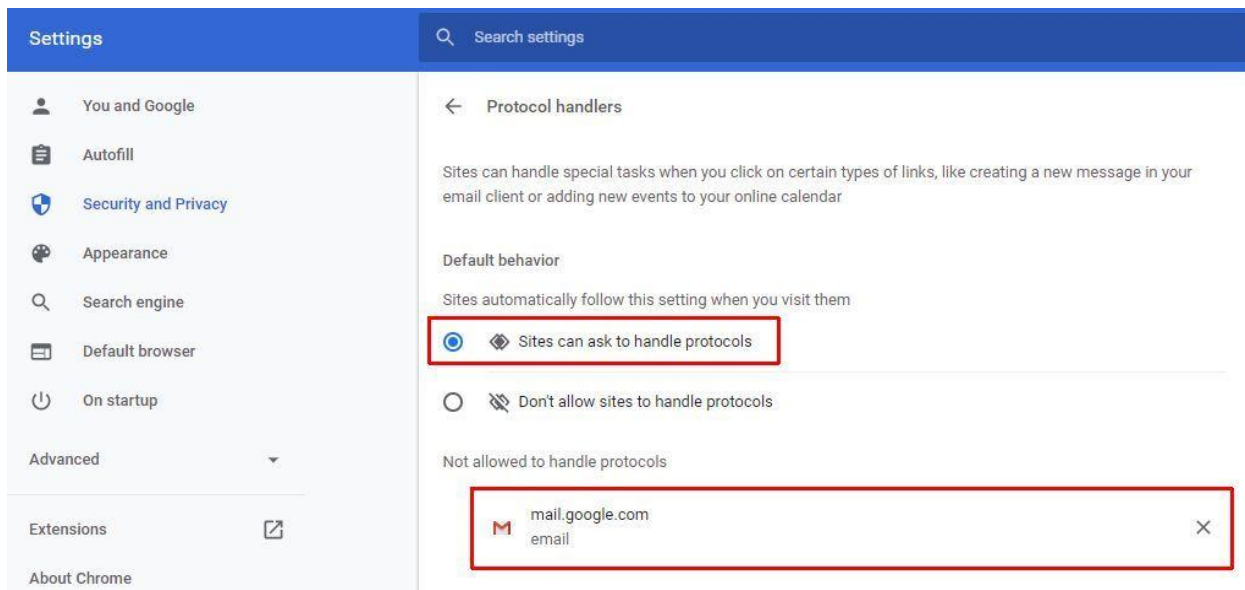
[Sign in to Gmail](#)—this works only when you're signed in—and look for the handler icon. It looks like a pair of gray overlapping diamond shapes, adjacent to the star icon in the address bar.

Click on the handler icon, and you'll get a popup dialog where you'll need to select the **Allow** option to ensure that Gmail opens all email links in the future.



Can't see the handler icon in the address bar? You might have changed its default behavior in Chrome settings. No problem.

Go to **Settings > Security and Privacy > Site Settings**, expand Additional permissions, and select Protocol handlers. Here, select the radio button next to **Sites can ask to handle protocols**. If you've accidentally blocked a site from handling protocols, you can remove it here.



In Firefox

Go to **Settings > Privacy & Security**, scroll down to **Applications**, and under Content Type look for the **mailto** option. The dropdown menu next to it is where you can specify which email program you want to use. It could be **Gmail, Yahoo! Mail**, or any other desktop email program such as [Thunderbird](#) or [Microsoft Outlook](#).

For linking to a desktop client, you'll have to use the **Use Other...** option in the dropdown menu and navigate to your email program via Explorer (or via Finder, if you're on a Mac).

- Search
- Privacy & Security
- Sync

Applications

Choose how Firefox handles the files you download from the web or the applications you use while browsing.

Search file types or applications

Content Type	Action
AV1 Image File (AVIF)	Open in Firefox
Extensible Markup Language (XML)	Open in Firefox
irc	Always ask
ircs	Always ask
mailto	Use Mail (default) ▼
Portable Document Format (PDF)	Always ask
Scalable Vector Graphics (SVG)	Use Mail (default)
WebP Image	Use Yahoo! Mail
	Use Gmail
	Use other...
	Application Details...